

## TWO NEW JURASSIC BRYOZOA FROM SOUTHERN ENGLAND

by PAUL D. TAYLOR

**ABSTRACT.** *Reptomultisparsa tumida* sp. nov. and *Reptoclausa porcata* sp. nov. are described respectively from the Bathonian Bradford Clay of Bradford-on-Avon and the Aalenian/Bajocian Inferior Oolite of the Cotswold Hills. The genus *Reptoclausa* was previously known only from the Cretaceous. *Reptoclausa* colonies have autozoecia located on longitudinal ridges which are separated by furrows composed of kenozoecia. This unusual arrangement of zoecia can be explained by the action of physiological growth gradients during colony life.

DURING a revision of some Jurassic Bryozoa from England and Normandy (Taylor 1977) two new species were recognized and are described for the first time in this paper. Both species are encrusting forms belonging to the Order Cyclostomata, the most abundant group of bryozoans during a period of relatively low species diversity. A tentative estimate of known Jurassic bryozoan diversity based on available data suggests the existence of about ninety species belonging to approximately thirty genera, although these figures are undoubtedly an underestimate of total worldwide diversity for three main reasons. First, almost all known Jurassic bryozoans have been described from either England, France, or Germany; they are extremely poorly known from other parts of the world (see Taylor 1977, pp. 336-338). Secondly, high levels of phenotypic variation within species of simple morphology has hindered taxonomic discrimination and quite probably has led to undersplitting. Genetic studies (e.g. Thorpe *et al.* 1978) of living bryozoans are beginning to reveal the presence of 'cryptic' species that are difficult to distinguish morphologically. Thirdly, non-calcified ctenostome bryozoans with a low fossilization potential were perhaps much more common during the Jurassic than is immediately obvious (Voigt 1977; Pohowsky 1978; Taylor 1978). Despite their low apparent diversity Jurassic bryozoans are ubiquitous in marine sediments, which accumulated in aerobic environments containing firm substrates (e.g. brachiopod shells) suitable for colony attachment. Some species developed erect growth from an attached base but the commonest species were totally encrusting, as are the two new species described here.

Type and figured specimens are housed in the British Museum (Natural History) (BMNH).

### FAMILIAL CLASSIFICATION OF JURASSIC TUBULOPORINID BRYOZOA

The order Cyclostomata was represented in the Jurassic by two suborders, the Tubuloporina and the Cerioporina. Six major Jurassic families of the Tubuloporina may be distinguished: Stomatoporidae, Oncousoeciidae, Macroeciidae (= Multisparidae), Plagioeciidae, Theonoidae, and Frondiporidae. The stomatoporids are typically encrusting uniserial or narrow multiserial ('ribbon-shaped') genera, apparently lacking the larval brooding polymorphs known as gonozooids which characterize the other tubuloporinid families. Oncousoeciids have branching adnate colonies and gonozooids with minute oeciopores. Macroecid and plagioecid genera developed a variety of convergent colony forms, both erect (e.g. '*Entalophora*', '*Pustulopora*') and encrusting (e.g. '*Berenicea*'), but the two families may be distinguished from one another by the structure of their gonozooids. Macroecid gonozooids are longitudinally elongate and possess comparatively large oeciopores (the orifice through which the larvae were released). Plagioecid gonozooids are broad, bulbous and possess

oeciopores which are considerably smaller than the apertures of autozooids in the same colony. In both the theonoids and the frondiporids, groups of contiguous autozooidal apertures form fascicles elevated above the general level of the colony surface. Frondiporid zooids are typically longer than those of theonoids and, whereas zooidal budding occurred within the lengthening frondiporid fascicles, within-fascicle zooidal budding is not known in the theonoids.

#### SYSTEMATIC PALAEOLOGY

Phylum BRYOZOA Ehrenberg, 1831  
 Class STENOLAEMATA Borg, 1926  
 Order CYCLOSTOMATA Busk, 1852  
 Suborder TUBULOPORINA Milne-Edwards, 1838  
 Family MACROECHIDAE Canu, 1918  
 Genus REPTOMULTISPARGA d'Orbigny, 1853

(see Walter 1969, p. 75, for a revised generic diagnosis)

#### *Reptomultisparga tumida* sp. nov.

Plate 88, fig. 1; text-fig. 1

*Derivation of name.* The trivial name *tumida* refers to the broad, swollen appearance of the gonozoecia.

*Holotype.* BMNH D13346 Bathonian, Bradford Clay (*discus* Zone), Bradford-on-Avon, Wiltshire.

*Paratypes.* BMNH D52651a-c, Bathonian, Bradford Clay, locality unknown. Other specimens in the authors collection are from the Bathonian White Limestone Formation of Foss Cross, Gloucestershire.

*Diagnosis.* *Reptomultisparga* with delicate unilamellar zoaria; autozoecia with maximum width midway along their frontal walls and possessing small apertures; gonozoecia broad and inflated.

*Description.* Zoaria (Pl. 88, fig. 1) are unilamellar, fan-shaped, or discoidal (bereniciform). Zooecia arise at divisions of existing interzoecial walls on a basal lamina.

Autozoecia have moderately long frontal walls characteristically attaining maximum width midway along their length. Interzoecial walls form conspicuous traces on the relatively flat zoarial surface. The small, circular autozoecial apertures are widely spaced and have raised rims but lack distinct peristomes.

Kenozoecia may occur around gonozoecial borders. Their proximal portions are identical to those of autozoecia but the kenozoecia are truncated distally by gonozoecial dilation and consequently lack an aperture.

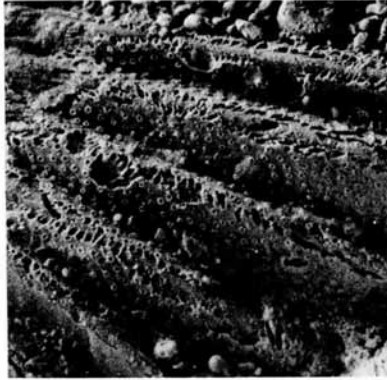
Gonozoecia (text-fig. 1) have narrow proximal portions and well-defined inflated distal portions with a circular to oval shape. The sub-terminal oeciopores lack oeciostomes and are transversely elongate and slightly smaller than autozoecial apertures.

#### EXPLANATION OF PLATE 88

Fig. 1. *Reptomultisparga tumida* sp. nov. BMNH D13346, Holotype colony, Bathonian, Bradford Clay, Bradford-on-Avon,  $\times 7$ .

Figs. 2-6. *Reptoclausa porcata* sp. nov. 2, BMNH B4855, immature colony prior to ridge development, Bajocian, Lower Ragstone, Cold Comfort,  $\times 7$ . 3-5, BMNH D8724, Holotype, Aalenian, Pea Grit, Birdlip. 3, intracolony overgrowth by a new layer of zooecia,  $\times 11$ . 4, furrow occupied by kenozoecia (centre right),  $\times 13$ . 5, autozoecia with rounded distal terminations,  $\times 30$ . 6, BMNH D10091, zoarium showing conspicuous furrows and ridges with a ridge dichotomy, Aalenian, Pea Grit, Crickley Hill,  $\times 8$ .

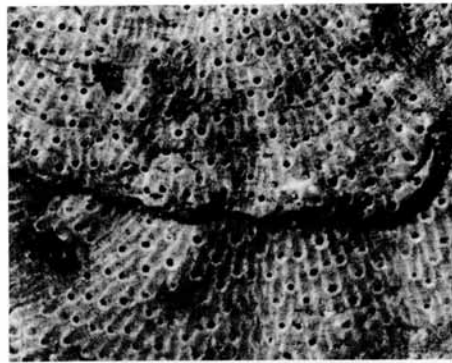
Figs. 1 and 2 are of ammonium chloride coated specimens.



1



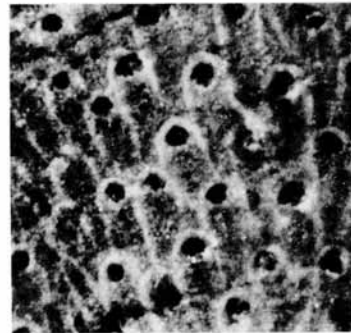
2



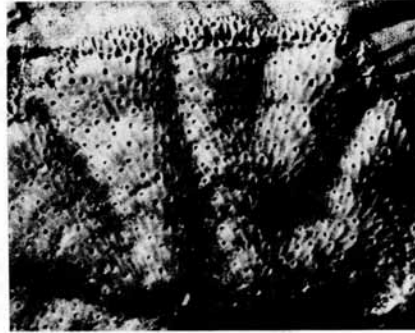
3



4

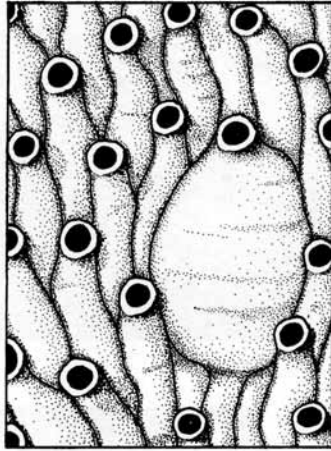


5



6

TAYLOR, Jurassic Bryozoa



TEXT-FIG. 1. *Reptomultisparsa tumida* sp. nov. BMNH D13346 (holotype), Upper Bathonian, Bradford Clay, Bradford-on-Avon, Wiltshire. A group of autozoecia and a bulbous gonozoecium.  $\times 38$ .

*Dimensions.* See Table 1.

*Remarks.* The relatively broad and inflated gonozoecia of *Reptomultisparsa tumida* distinguish it from other species in the genus, and the subterminal position of the oeciostome contrasts with the terminal oeciostomes developed in plagioecids with similar bereniciform colonies.

*Stratigraphical range.* Upper Bathonian.

TABLE 1. Dimensions (in mm) of *Reptomultisparsa tumida* zoecia. Abbreviations of morphological characters: law, longitudinal autozoecial aperture width; taw, transverse autozoecial aperture width; fwl, autozoecial frontal wall length; fww, autozoecial frontal wall width (maximum); tgl, total gonozoecial frontal wall length; igl, length of inflated portion of the gonozoecial frontal wall; gw, gonozoecial frontal wall width (maximum); low, longitudinal oeciopore width; tow, transverse oeciopore width. Abbreviations of statistical functions: Nc, number of colonies from which measurements were taken; Nz, number of zoecia measured;  $\bar{x}$ , mean value; Rc, range of colony means; Rz, total range of values.

	Nc	Nz	$\bar{x}$	Rc	Rz
law	3	55	0.08	0.08	0.06-0.10
taw	3	55	0.08	0.08	0.06-0.09
fwl	3	55	0.67	0.63-0.69	0.46-0.88
fww	3	55	0.18	0.17-0.19	0.14-0.21
tgl	3	3	1.44	1.20-1.82	1.20-1.82
igl	3	6	1.11	0.92-1.34	0.86-1.34
gw	3	6	0.62	0.53-0.67	0.51-0.80
low	3	5	0.06	0.06	0.05-0.07
tow	3	5	0.07	0.06-0.08	0.06-0.10

## Genus REPTOCLAUSA d'Orbigny, 1853

*Reptoclusa porcata* sp. nov.

Plate 88, figs. 2-6; text-fig. 2

- ?1894 *Berenicea allaudi* (Sauvage); Gregory, p. 60.  
 1896a *Berenicea Allaudi* (Sauvage); Gregory, p. 44 (*partim.*).  
 1896b *Berenicea allaudi* (Sauvage); Gregory, p. 77 (*partim.*), pl. 3, fig. 6.  
 1969 *Idmonea triquetra* Lamouroux; Walter, p. 52 (*partim.*), pl. 3, figs. 11-13 only.

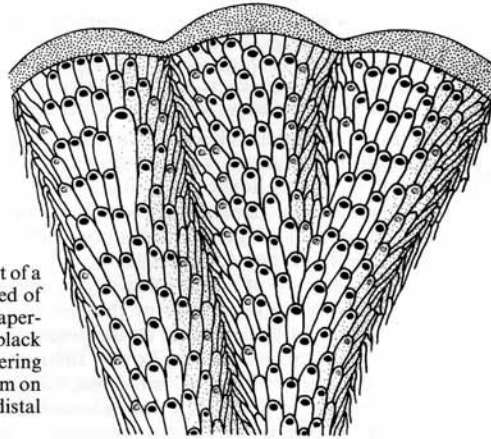
*Derivation of name.* The trivial name *porcata* refers to the ridged and furrowed form of the zoarium.

*Holotype.* BMNH D8724, Aalenian, Pea Grit (*murchisonae* Zone), Birdlip, Gloucestershire.

*Paratypes.* BMNH D7526a-b, Aalenian, Pea Grit (*murchisonae* Zone), near Stroud, Gloucestershire. BMNH D31586, Aalenian, Lower Limestone (*murchisonae* Zone), Crickley Hill, Gloucestershire. BMNH B2290a-c, Inferior Oolite, Crickley Hill, Gloucestershire. BMNH B4855, Lower Ragstone (*discites* Zone), Cold Comfort, Gloucestershire. BMNH D1795, Inferior Oolite, ?locality. BMNH D10091, Pea Grit (*murchisonae* Zone), Crickley Hill, Gloucestershire. BMNH D30002a-c, Lower Limestone (*murchisonae* Zone), Kimsbury, Painswick, Gloucestershire.

*Diagnosis.* *Reptoclusa* with continuous autozooeccial ridges separated by furrows of kenozooeccia; zoaria commonly unilamellar, occasionally multilamellar.

*Description.* Zoaria are adnate, fan-shaped (Pl. 88, fig. 2) to discoidal, commonly unilamellar but occasionally multilamellar (Pl. 88, fig. 3). Zooecia arise where existing interzooeccial walls divide on a basal lamina at the colony growth margin. Rounded ridges of low profile cross the zoarial surface parallel to the direction of growth and form lobate projections where they meet the colony growth margin (Pl. 88, fig. 6). Ridge crests are about 2 mm apart and new ridges appear at dichotomies of established ridges. Ridges are occupied by autozooeccia orientated with their long axes slightly divergent from the ridge crest. Zooecium size, particularly width, decreases progressively away from ridges towards intervening furrows occupied by kenozooeccia (text-fig. 2). Multilamellar growth was achieved either by spiral overgrowth around irregularly distributed pivot points (Taylor 1976), or by a process, comparable with the frontal budding known in cheilostomes (Banta 1972), in which an overgrowing zooecium arose from an autozooeccial aperture to initiate a fan-shaped expansion on the zoarial surface. The first zooecium of each new frontally budded layer has a short frontal wall and a longitudinally elongate aperture.



TEXT-FIG. 2. Semidiagrammatic representation of part of a *Reptoclusa porcata* colony showing ridges composed of autozooeccia and furrows of kenozooeccia lacking apertures. Open autozooeccial apertures are shown in black and the occluded apertures of autozooeccia bordering kenozooeccial furrows are stippled. The large zooecium on the left-hand ridge is a gonozoecium. The lobate distal growth margin is evenly stippled. Approx.  $\times 18$ .

Frontal walls of autozoecia are thick, have rounded distal terminations (Pl. 88, fig. 5), and are clearly defined by traces of vertical interzoecial walls on the zoarial surface. Autozoecial apertures are slightly transversely elongate. Thin-walled peristomes are preserved only when immured by intracolony overgrowths. Terminal diaphragms, level with the frontal walls, frequently occlude zoecia, particularly those situated at boundaries between ridges and furrows (text-fig. 2). Ontogenetic zonation (Silén and Harmelin 1974) of autozoecia is not apparent.

Kenozoecia, occurring regularly in furrows between autozoecial ridges (Pl. 88, fig. 4), have narrow frontal walls defined by the faint traces on the zoarial surface of their vertical interzoecial walls. Less elongate kenozoecia may occur at growth margin anastomoses and in the vicinity of zoarial lateral walls.

Gonozoecia are developed in about 50% of the zoaria examined. They are elongate, slightly dilated in width and inflated, and are situated on zoarial ridges. The transversely elongate oeciopores are about the same size as autozoecial apertures.

*Dimensions.* See Table 2.

TABLE 2. Dimensions (in mm) of *Reptoclausa porcata* zoecia. Abbreviations as in Table 1.

	Nc	Nz	$\bar{x}$	Rc	Rz
law	5	125	0.10	0.09-0.10	0.07-0.11
taw	5	125	0.10	0.09-0.11	0.08-0.13
fwl	5	125	0.61	0.52-0.66	0.40-0.80
fww	5	125	0.22	0.22-0.23	0.18-0.29
tgl	4	34	1.70	1.62-1.77	1.17-2.25
gw	4	36	0.43	0.37-0.46	0.35-0.59
low	3	19	0.09	0.08-0.09	0.07-0.13
tow	3	19	0.12	0.11-0.14	0.10-0.15

*Remarks.* Among the specimens included by Gregory (1869b) in *Berenicea allaudi* (Sauvage) are two (BMNH D1794, D1795) belonging to this new species. *Rosacilla allaudi* of Sauvage (1888) is a simple, multiserial tubuloporinidean lacking ridged zoaria and quite distinct from the species figured as *Berenicea allaudi* by Gregory (1896b, pl. 3, fig. 6). Walter (1969, p. 52) includes specimens of *Reptoclausa porcata* within *Idmonea triquetra* Lamouroux 1821. *Reptoclausa porcata*, however, differs from *Idmonea triquetra* in the following features:

1, *R. porcata* zoaria have a fan-shaped to discoidal form whereas zoaria of *I. triquetra* consist of dichotomising narrow multiserial branches. 2, The branches of *I. triquetra* have a well-defined triangular cross-section distinct from the rounded ridges of *R. porcata*. 3, Oeciopores of *I. triquetra* are about half the diameter of *R. porcata* oeciopores. 4, *I. triquetra* zoecia are usually arranged in distinct rows. Those of *R. porcata* are not usually arranged in rows and have larger frontal wall dimensions.

Furthermore, *R. porcata* is known only from the Upper Aalenian and Lower Bajocian, whereas the probable range of *I. triquetra* is Upper Bajocian to Lower Callovian (Walter 1969).

Hillmer (1971, p. 42) noted the similarity between Lower Cretaceous *Reptoclausa* and two of Walter's (1969) figured *Idmonea triquetra* specimens (BMNH D10091, D31586) which are here included in *R. porcata*. *R. porcata* differs from the Lower Cretaceous type-species of *Reptoclausa*, *R. neocomiensis* d'Orbigny (redescribed by Hillmer 1971), which has autozoecial ridges discontinuous in the direction of colony growth and kenozoecia occupying a larger proportion of the zoarial surface. The known range of the genus *Reptoclausa* is extended back from the Lower Cretaceous into the Middle Jurassic by the description of *R. porcata*.

*R. porcata* is abundant in the Lower Inferior Oolite of the Cotswolds where, along with *Reptomultisparsa cricopora* and *R. ventricosa*, it is found encrusting a variety of substrates including the large terebratulid brachiopod *Pseudoglossothyris simplex* and limestone intraclasts. Some of the brachiopod-encrusting colonies may represent associations with a living brachiopod because

bryozoan growth is frequently found to terminate at a growth line on the brachiopod shell suggesting that growth of both bryozoan and brachiopod were checked simultaneously but, whereas brachiopod growth later recommenced, bryozoan growth did not (Ager 1961).

*Stratigraphical range.* Upper Aalenian-Lower Bajocian.

*Discussion.* The morphology of *Reptoclausa porcata* contrasts with that of most other multiserial encrusting tubuloporinideans (e.g. *Reptomultisparsa tumida*) and deserves further consideration. In colonies of *Reptoclausa porcata* zooecium size, particularly frontal wall width, decreases progressively passing from the crests of the ridges to the bottoms of the furrows (text-fig. 2). Ridge crests bear broad autozooecia, furrows are composed of narrow kenozoecia, and the intervening regions between ridge crests and furrows possess comparatively narrow autozooecia typically occluded by terminal diaphragms. This type of morphological gradient perpendicular to the growth direction of the colony suggests the presence during life of a physiological gradient (Bronstein 1939; Anstey *et al.* 1976), perhaps hormonal, which determined zooid structure according to position of budding. Comparatively large zooids were budded at regularly spaced loci along the growing edge of the colony. Here, the zoarium was differentially thickened to give a ridge which formed a lobate projection where it intersected the colony growing edge. These large zooids displayed a dominance over zooids budded between loci causing them to be crowded and reduced in size. The smallest zooids budded between loci were too small to support a functional polypide (gut and tentacles) and thus became kenozooids. It seems that zooids of intermediate size could support only a short-lived polypide whose degeneration was followed by early occlusion of the zooecial aperture by a terminal diaphragm. The functional significance of the unusual arrangement of autozooecia and kenozoecia in *Reptoclausa* is unclear but may relate to the maintenance of efficient colony feeding, with autozooid exhalant currents departing from the colony surface above regions of non-feeding kenozooids (see Taylor 1979).

*Acknowledgements.* I thank Dr. G. P. Larwood (University of Durham) for constructive criticism of the manuscript and for his supervision during the course of a N.E.R.C. funded research project. Continued support from N.E.R.C. in the form of a research fellowship is also gratefully acknowledged. Miss J. Darrell kindly arranged the loan of specimens from the British Museum (Natural History). Valuable photographic assistance was provided by Dr. J. C. W. Cope (University College of Swansea).

#### REFERENCES

- AGER, D. V. 1961. The epifauna of a Devonian Spiriferid. *Q. Jl geol. Soc. Lond.* **117**, 1-10.
- ANSTEY, R. L., PACHUT, J. F. and PREZBINDOWSKI, D. R. 1976. Morphogenetic gradients in Paleozoic bryozoan colonies. *Paleobiology*, **2**, 131-146.
- BANTA, W. C. 1972. The body wall of cheilostome Bryozoa. V. Frontal budding in *Schizoporella unicornis floridana*. *Mar. Biol.* **14**, 63-71.
- BORG, F. 1926. Studies on Recent cyclostomatous Bryozoa. *Zool. Bidr. Upps.* **10**, 181-507.
- BRONSTEIN, G. 1939. Sur les gradients physiologiques dans une colonie de Bryozoaires. *C.r. hebdo. Séanc. Acad. Sci., Paris*, **209**, 602-603.
- BUSK, G. 1852. *Catalogue of marine Polyzoa in the collection of the British Museum. 1. Cheilostomata*. 54 pp., British Museum (Natural History), London.
- CANU, F. 1918. Les ovicelles des Bryozoaires Cyclostomes. Études sur quelques familles nouvelles et anciennes. *Bull. Soc. géol. Fr.* 4th series, **16**, 324-335.
- EHRENBERG, C. G. 1831. *Symbolae physicae, seu Icones et Descriptiones Mammalium, Avium, Insectorum et Animalium Evertibratorum. Pars Zoologica*, Dec. 1. 4. Berlin.
- GREGORY, J. W. 1894. Catalogue of the Jurassic Bryozoa in the York Museum. *Rep. Yorks. phil. Soc.* for 1893, 58-61.
- 1896a. A revision of the British Jurassic Bryozoa. Part III. The Genus *Berenicea*. *Ann. Mag. nat. Hist.* 6th series, **17**, 41-49.
- 1896b. *Catalogue of the fossil Bryozoa in the Department of Geology, British Museum (Natural History). The Jurassic Bryozoa*. 239 pp., 11 pls., British Museum (Natural History), London.



- HILLMER, G. 1971. Bryozoen (Cyclostomata) aus dem Unter-Hauterive von Nordwestdeutschland. *Mitt. geol.-paläont. Inst. Univ. Hamburg*, **40**, 5-106.
- MILNE-EDWARDS, H. 1838. Mémoire sur les Crisies, les Hornères et plusieurs autres Polypes vivans ou fossiles dont l'organisation est analogue a celle des Tubulipores. *Annls Sci. nat. Sér. 2*, **9**, 193-238, pls. 6-16.
- ORBIGNY, A. d'. 1853. *Paleontologie française, terrains crétacés, 5 Bryozoaires*. **1**, 1191 pp., **2** (atlas), pls. 600-800. Paris.
- POHOWSKY, R. A. 1978. The boring ctenostomate Bryozoa: taxonomy and paleobiology based on cavities in calcareous substrata. *Bull. Am. Paleont.* **73**, No. 301, 1-192.
- SAUVAGE, H. E. 1888. Note sur les Bryozoaires Jurassiques de Boulogne. *Bull. Soc. géol. Fr.* 3rd series, **27**, 38-53.
- SILÉN, L. and HARMELIN, J.-G. 1974. Observations on living Diastoporidae (Bryozoa Cyclostomata) with special regard to polymorphism. *Acta zool., Stockh.* **55**, 81-96.
- TAYLOR, P. D. 1976. Multilamellar growth in two Jurassic cyclostomatous Bryozoa. *Palaeontology*, **19**, 293-306.
- 1977. *The palaeobiology and systematics of some Jurassic Bryozoa*. Ph.D. thesis (unpubl.), University of Durham. 518 + lviii pp.
- 1978. A Jurassic ctenostome bryozoan from Yorkshire. *Proc. Yorks. geol. Soc.* **42**, 211-216.
- 1979. The inference of extrazooidal feeding currents in fossil bryozoan colonies. *Lethaia*, **12**, 47-56.
- THORPE, J. P., RYLAND, J. S. and BEARDMORE, J. A. 1978. Genetic variation and biochemical systematics in the marine bryozoan *Alcyonidium mytili*. *Mar. Biol.* **49**, 343-350.
- VOIGT, E. 1977. *Arachnidium jurassicum* n. sp. (Bryoz. Ctenostomata) aus dem mittleren Dogger von Goslar am Harz. *Neues Jb. Geol. Paläont. Abh.* **153**, 170-179.
- WALTER, B. 1969. Les Bryozoaires Jurassiques en France. Étude systématique. Rapports avec la stratigraphie et la paléocologie. *Docums Lab. Géol. Fac. Sci. Lyon*, **35**, 1-328, pls. 1-20.

PAUL D. TAYLOR  
Department of Palaeontology  
British Museum (Natural History)  
Cromwell Road  
London, SW7 5BD

Manuscript received 2 October 1978

Revised manuscript received 20 June 1979